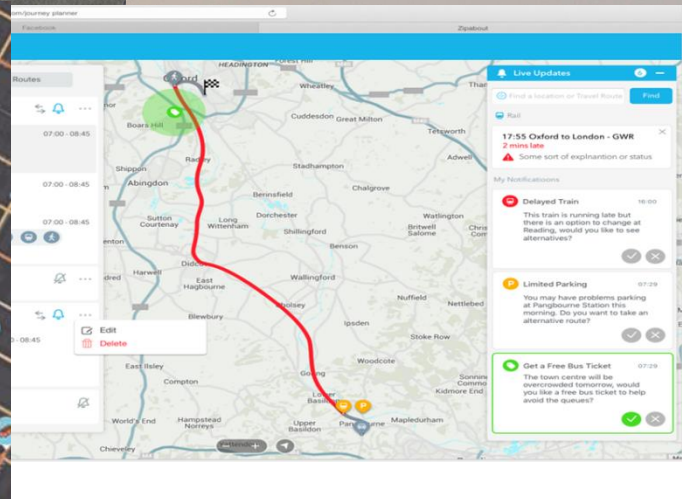
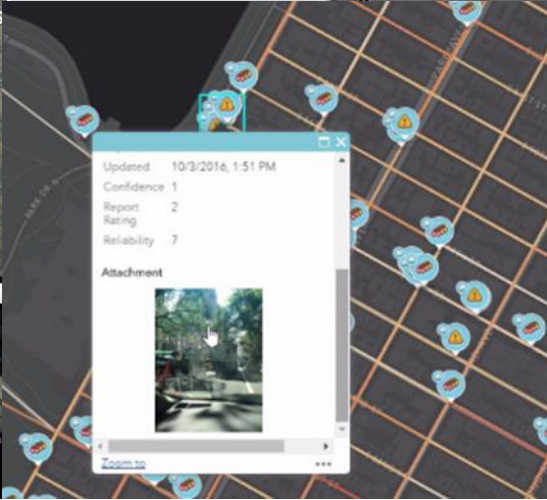
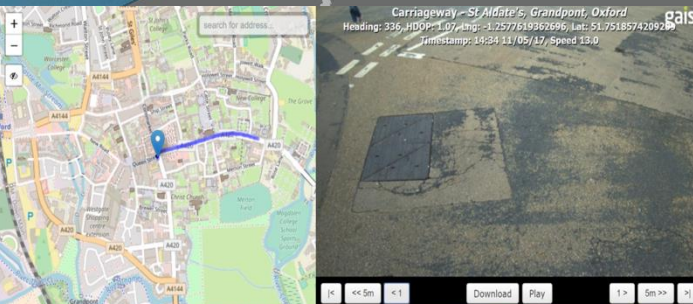
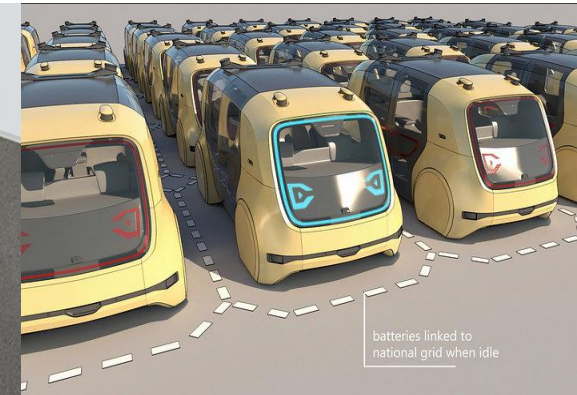
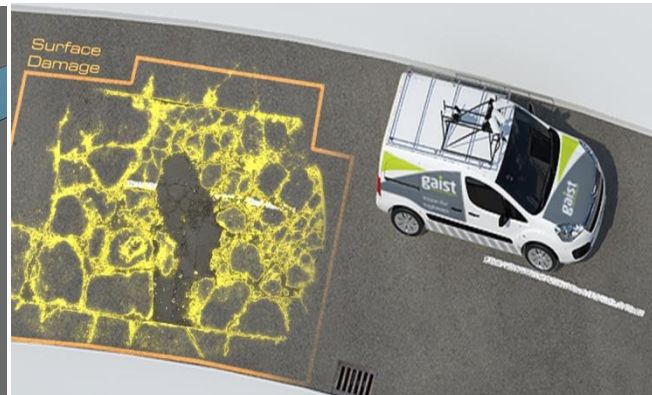
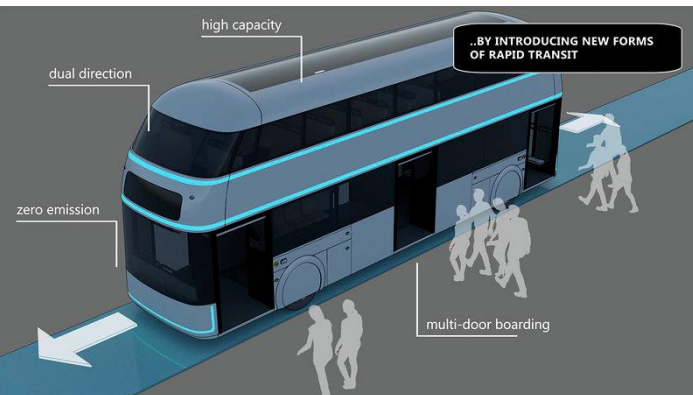


International Brokerage Event Brussels, 26-27/10/2017



Oxfordshire County Council James Golding-Graham james.goding-graham@oxfordshire.gov.uk



Description of Oxfordshire County Council Innovation and Research team -



- The I&R team are focused on developing links to business and academia, as well as securing external funding for projects. Working with partners that drive disruptive technologies we challenge status quo and drive new solutions for Oxfordshire beyond.
- Constantly looking for new ways to collaborate with external organisations. The team acts as a catalyst to create a resilient and sustainable future through delivery of transformative operating models, partnerships and applied innovation..
- The Innovation and Research team is growing with direct involvement projects covering IOT, autonomous vehicle testing and deployment, MaaS, total transport, energy and climate and data projects and have successfully partnered on several EU funding bids focusing mainly on energy and transport initiatives
- We are a core member of SmartOxford
<https://www.oxfordsmartcity.uk/cgi-bin/about.pl>

Description of the your research interest

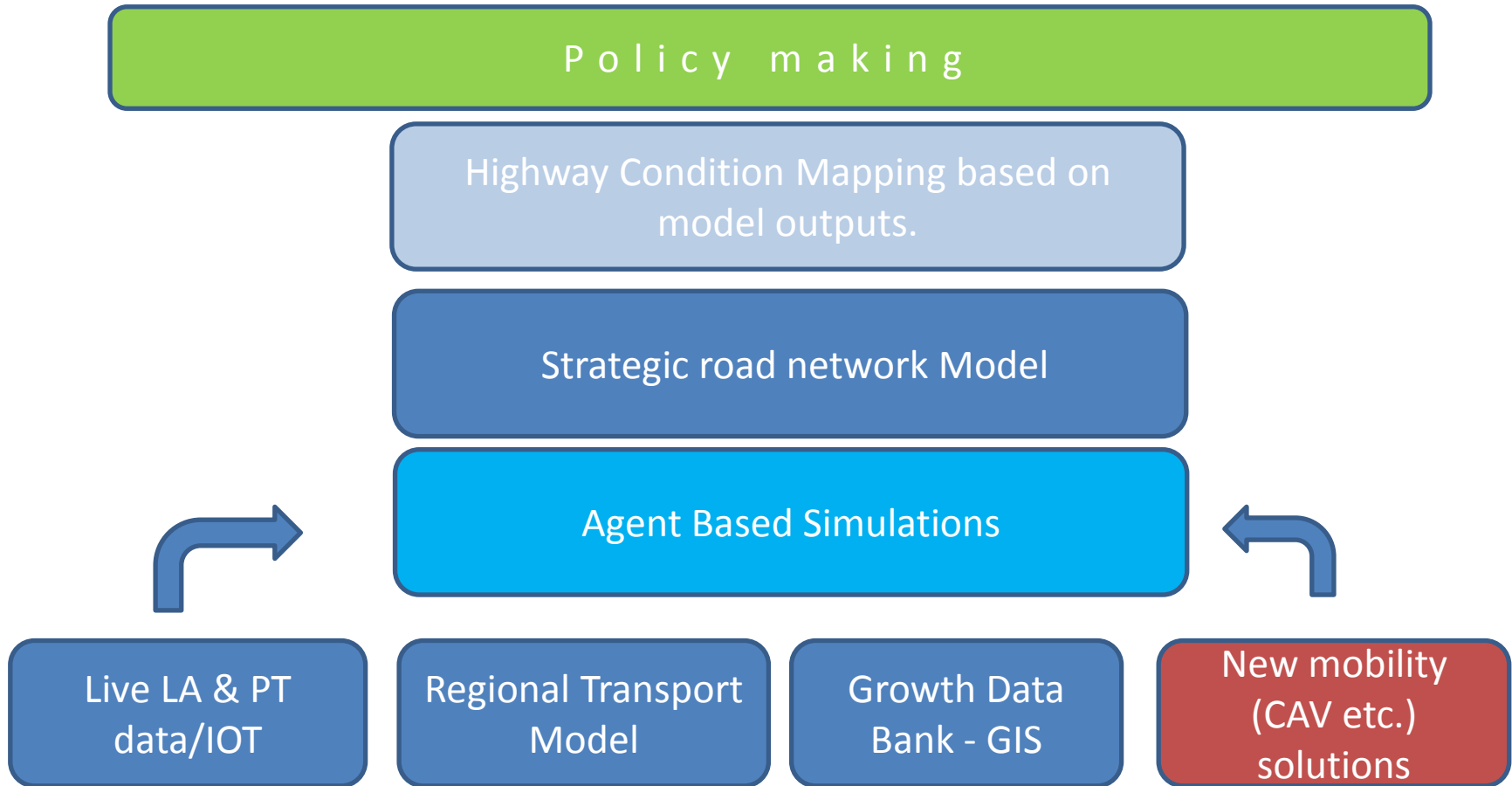


We are a growing team within the authority with 11 FTE. We are working with both EU and UK public funding as well as developing further business models to support innovation in our locality. We have built a team with focus on IM, smart cities, energy, nature based solutions, efficiency in buildings and Hydrogen economy.

Our region is a key focus of growth and innovation in transport (CAV) and robotics, Oxfordshire is looking to deliver 100,000 new homes to 2050 with close to 800,000 across the OX/cambs corridor. Whilst the capital cost of this growth and it's impact are possible to calculate the revenue / operational cost impact of growth and innovation in transport on managed assets that the Regional Transport Authority manage is difficult to qualify.

The project will help to answer these questions based on real data and scenarios.

LC-MG-1-3-2018: Harnessing and understanding the impacts of changes in urban mobility on policy making by city-led innovation for sustainable urban mobility



Objectives:

- To Collate a data hub of agreed/permitted development in high growth regions
- To collate and merge regional transport models
- To combine the above data hubs with live IOT/UTMC data to develop Agent Based Model -
- Model impacts of CAV growth (private public and freight) -Big Data Analytics combined with Machine Learning providing new Insights and predictive analytics
Develop policy tool kit

Expected results:

- Map impacts of growth on strategic transport infrastructure
- Pan regional understanding of development impacts
- Greater co-operation
- Better public sector understanding of contracting with civil engineering contractors
- Better/wider understanding of impacts of CAV

Consortium - profile of known partners *(if any)*



No	Partner Name	Type	Country	Role in the Project
01	Oxfordshire CC	Gov	UK	Regional transport Authority
02	England Economic Heartland	Gov	UK	Sub National Transport body
03	Gaist Solutions	SME	UK	Tech provider – infrastructure
04	Zipabout	SME	UK	Tech provider – Data Aggregator
05	ImSIM	SME	UK	Tech Provider – ABM
06	Oxford University	RI	UK	Research
07				
08				

Consortium - required partners



No	Expertise	Type	Country	Role in the project
01	Regional Transport body	RTD	?	TBC
02	Exploitation strategy	SME	?	TBC
03	ACADEMIC	IND	?	LEAD
04	ETC			
05	Etc			
06				
07				
08				

James Golding-Graham
Oxfordshire County Council
Innovation & Research
UK

0044 (0)7824 498-848

james.golding-graham@oxfordshire.gov.uk