

# MARIE SKŁODOWSKA-CURIE ACTIONS RRI – RESPONSIBLE RESEARCH AND INNOVATION IMPLEMENTATION OF THE PROPOSAL

**Jesús Rojo González**

NCP Marie Skłodowska-Curie Actions

Izmir, 17-18th March 2016

# Content

---



- RRI – Responsible Research and Innovation
- Implementation of the Proposal.
- Gantt Charts
- Building our Consortium

# RRI: Responsible Research and Innovation

RRI is now a term in the legal text of Horizon 2020 from the European Parliament, Preamble 22 (our emphasis):



(22) *With the aim of deepening the relationship between science and society and reinforcing public confidence in science, Horizon 2020 should [...] by **developing responsible research and innovation agendas that meet citizens' and civil society's concerns and expectations ...***

- Responsible Research and Innovation means that **societal actors work together during the whole research** and innovation process in order to better **align both the process and its outcomes, with the values, needs and expectations** of European society.

[https://ec.europa.eu/research/swafs/pdf/pub\\_rri/KI0214595ENC.pdf](https://ec.europa.eu/research/swafs/pdf/pub_rri/KI0214595ENC.pdf)



## *RRI is a Cross-Cutting Issue in Horizon 2020*

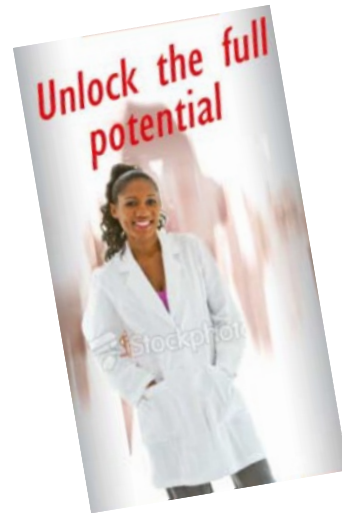




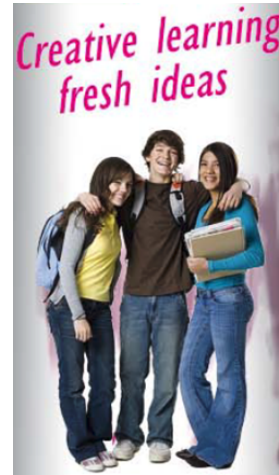
# Five Dimensions of RRI



## Engagement



## Gender Equality



## Science Education



## Ethics



## Open Access

- 1.The engagement of citizens and civil society in Research and Innovation;
- 2.The Gender equality and gender dimension in the Research content;
- 3.Formal and informal science education;
- 4.Ethics;
- 5.And a more open science, including the open access to scientific results.

# Gender Equality

---

Three objectives underpin the Commission's activities on gender equality in Horizon 2020



- Fostering **gender balance in Horizon 2020 research teams**, in order to **address the gaps** in the participation of women in the Framework Programme's projects
- Ensuring **gender balance in decision-making**, in order to reach the Commission's target of 40% of the under-represented sex in panels and groups (50% for advisory Groups)
- **Integrating gender/sex analysis in research and innovation** (R&I) content, helps improve the scientific quality and societal relevance of the produced knowledge, technology and/or innovation

# Gender Equality

---

## Documentation and European Projects related with Gender Equality



- *Promoting gender equality in research institutions and the integration of the gender dimension in research contents:*  
[http://cordis.europa.eu/projects/rcn/111445\\_en.html](http://cordis.europa.eu/projects/rcn/111445_en.html)
- *GRACE: Gender and Cultures of Equality in Europe (ITN 2015)*  
<http://www2.hull.ac.uk/fass/social-sciences/research/funded-research-projects/grace.aspx>
- *European Commission (2014). Gender Equality in Horizon 2020:*  
[http://ec.europa.eu/research/participants/data/ref/h2020/grants\\_manual/h2020-hi-guide-gender\\_en.pdf](http://ec.europa.eu/research/participants/data/ref/h2020/grants_manual/h2020-hi-guide-gender_en.pdf)
- *LERU: Gendered research and innovation: Integrating sex and gender analysis into the research process. EU – SWAFS Gendered Innovations (Health & Medicine, Engineering, Environment)*  
[http://ec.europa.eu/research/swafs/gendered-innovations/index\\_en.cfm](http://ec.europa.eu/research/swafs/gendered-innovations/index_en.cfm)

# Ethics Issues

---

Ethics Issues in H2020 are crucial not only in Life Science Projects.



- Embryon / Fetous
- Human
- Human Cells / Tissues
- Personal Data protection
- Animals
- Third Countries
- Enviromental Protection and Safety
- Dual Use
- Malevolent Use
- Other Aspects



**86% ITN 2014**

All proposal considered for funding will be submitted to an Ethics Review

# Ethics Self-Assessment by the applicant

Each applicant is responsible for:

- **Identify** any potential ethics issues
- **Handling** ethical aspect of their proposal
- **Detailing** how they plan to address them in sufficient detail already at the proposal stage.



The Ethics part of each proposal (Ethic Issues Table en part A,) should include description of issues and how the applicants plan to deal with them (Ethics Self-Assessment en part B)



## ETHICS ISSUES TABLE - CHECKLIST

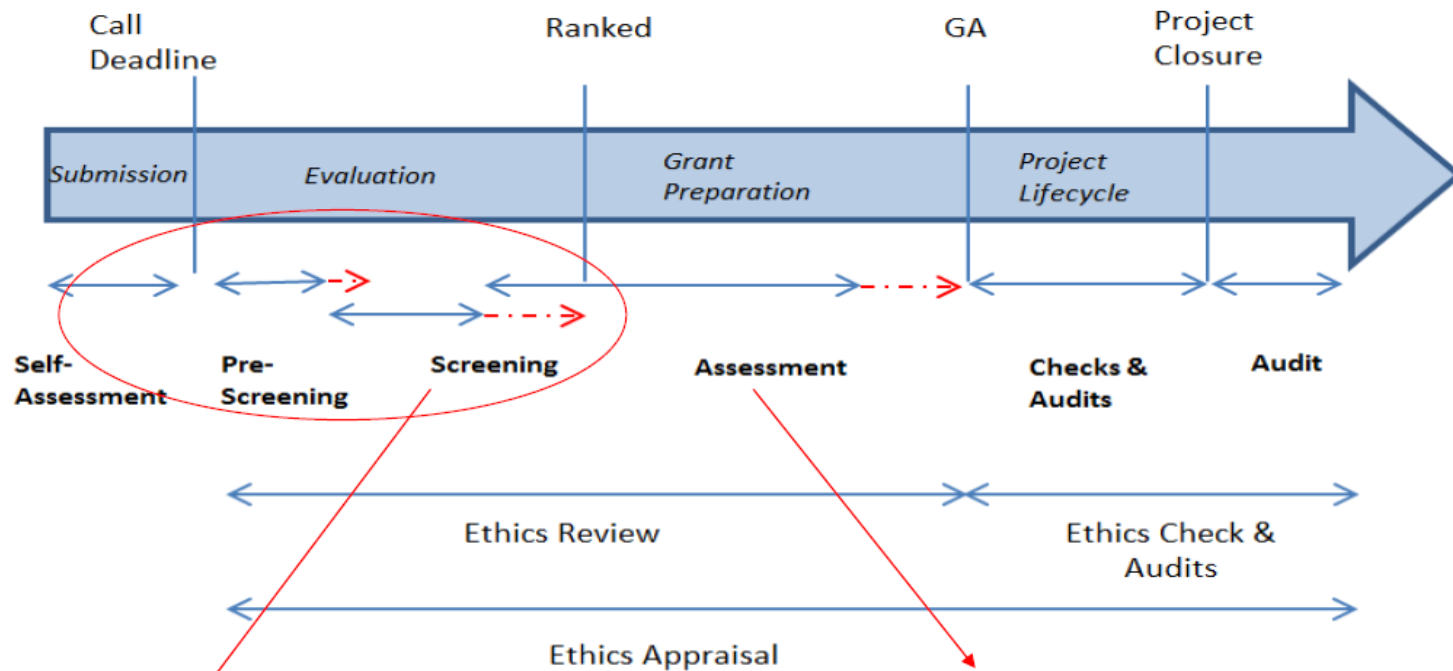
Marie Skłodowska-Curie Actions  
Innovative Training Networks (ITN)  
Call identifier: H2020-MSCA-ITN-2014  
Closing Date: 09 April 2014 at 17:00:00  
(Brussels local time)

[RTD-ETHICS-REVIEW-HELPDESK@ec.europa.eu](mailto:RTD-ETHICS-REVIEW-HELPDESK@ec.europa.eu)

[http://ec.europa.eu/research/participants/portal/doc/call/h2020/h2020-msca-itn-2015/1620147-h2020 - guidance\\_ethics\\_self\\_assess\\_en.pdf](http://ec.europa.eu/research/participants/portal/doc/call/h2020/h2020-msca-itn-2015/1620147-h2020 - guidance_ethics_self_assess_en.pdf)

[http://ec.europa.eu/research/participants/portal/doc/call/h2020/h2020-msca-itn-2014/1597698-itn\\_2014 - ethics\\_issues\\_checklist\\_en.pdf](http://ec.europa.eu/research/participants/portal/doc/call/h2020/h2020-msca-itn-2014/1597698-itn_2014 - ethics_issues_checklist_en.pdf)

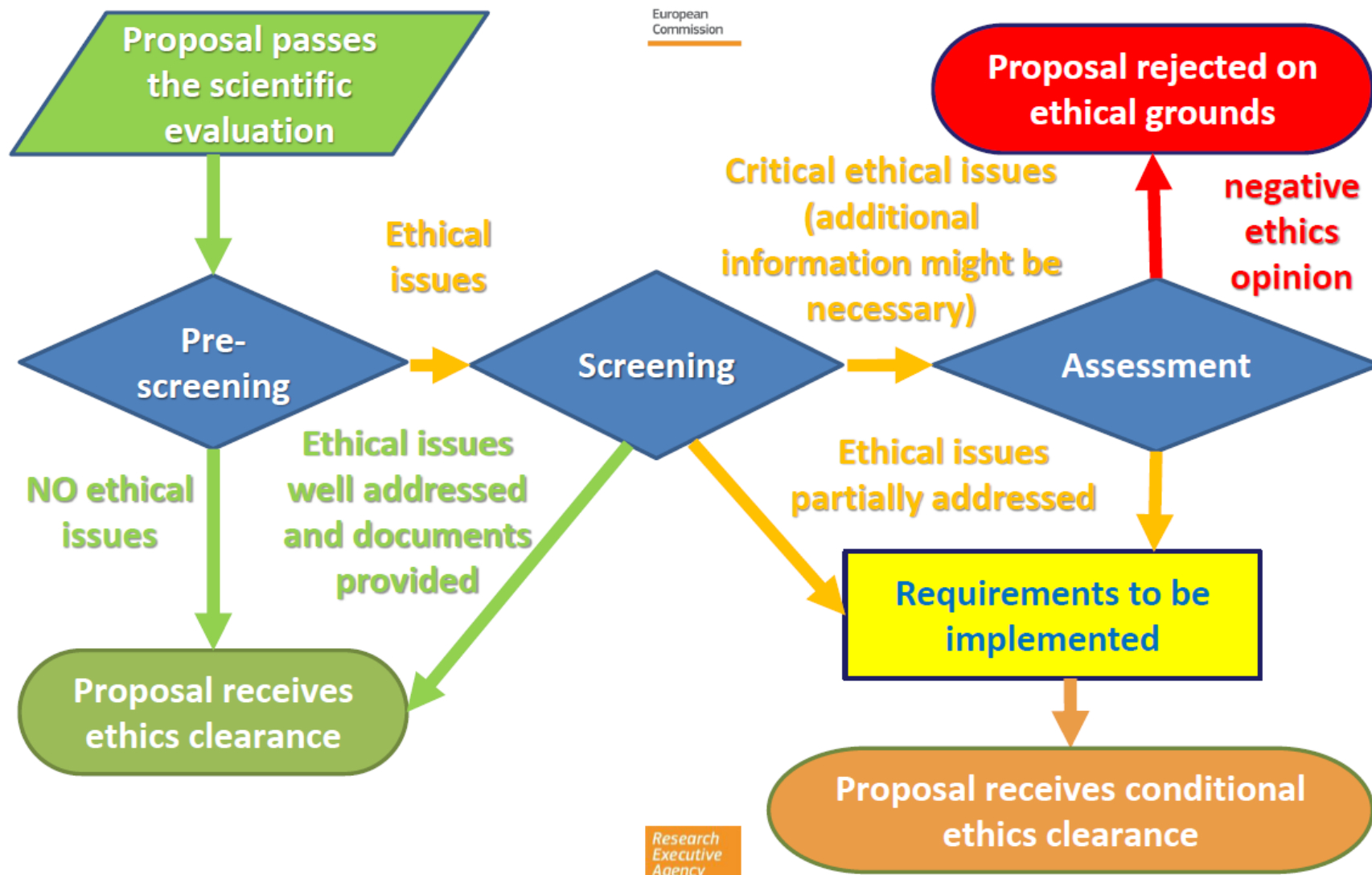
# Ethics Appraisal



Stage 1 — **Ethics screening**, starting with the **pre-screening** (on the basis of your 'ethics selfassessment') to see if it raises 'ethical issues' and whether they are adequately handled.

Research  
Executive  
Agency

Stage 2 — **Ethics assessment**; for proposals raising serious ethical issues (e.g. severe intervention on humans, lack of appropriate ethics framework in the country where the research will be conducted, etc.) a more detailed analysis is made.



# Useful Information

---



- **Participant Portal H2020 Ethics section:**  
[http://ec.europa.eu/research/participants/docs/h2020-funding-guide/cross-cutting-issues/ethics\\_en.htm](http://ec.europa.eu/research/participants/docs/h2020-funding-guide/cross-cutting-issues/ethics_en.htm)
- **Ethics issues table-Checklist:**  
[http://ec.europa.eu/research/participants/portal/doc/call/h2020/h2020-msca-itn-2014/1597698-itn\\_2014\\_-\\_ethics\\_issues\\_checklist\\_en.pdf](http://ec.europa.eu/research/participants/portal/doc/call/h2020/h2020-msca-itn-2014/1597698-itn_2014_-_ethics_issues_checklist_en.pdf)
- **Ethics Guidance**  
[http://ec.europa.eu/research/participants/portal/doc/call/h2020/h2020-msca-itn-2015/1620147-h2020\\_-\\_guidance\\_ethics\\_self\\_assess\\_en.pdf](http://ec.europa.eu/research/participants/portal/doc/call/h2020/h2020-msca-itn-2015/1620147-h2020_-_guidance_ethics_self_assess_en.pdf)





# HR Excellence in Research

## 2 Key Documents: “Charter and Code”

European Charter for Researchers

The Code of Conduct for the Recruitment of Researchers

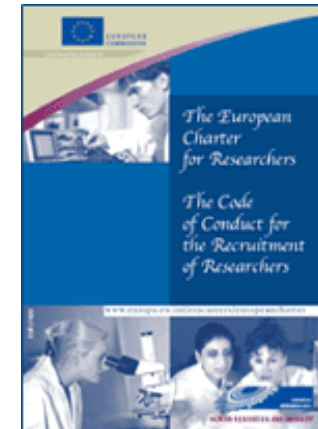
[http://ec.europa.eu/euraxess/pdf/brochure\\_rights/eur\\_21620\\_es-en.pdf](http://ec.europa.eu/euraxess/pdf/brochure_rights/eur_21620_es-en.pdf)

***HR Excellence in Research (HRS4R)***

Have the organisations earned? Explain it.

<http://ec.europa.eu/euraxess/index.cfm/rights/strategy4Researcher>

**But....don't assume that evaluator knows what this means. Explain it to them.**



# 3.1: Workplan

---

Use the Tables provided to describe the Work Packages (WPs)

- 3 -4 Research WPs
- Management WP
- Training WP
- Dissemination/Exploitation/Communication/Public Engagement WP

Under “Description of Work and Role of Specific Beneficiaries / Partner Organisations”

- DoW: Break down each **WP into several Tasks** (3-6 is typical)
- Role: Use org short names from Participants Table to indicate which org(s) are responsible for each Task
- Indicate timescales for the **Tasks** (in months elapsed from the start of the project)
- Ensure everything matches the details given elsewhere in the application (esp. the Gantt chart)



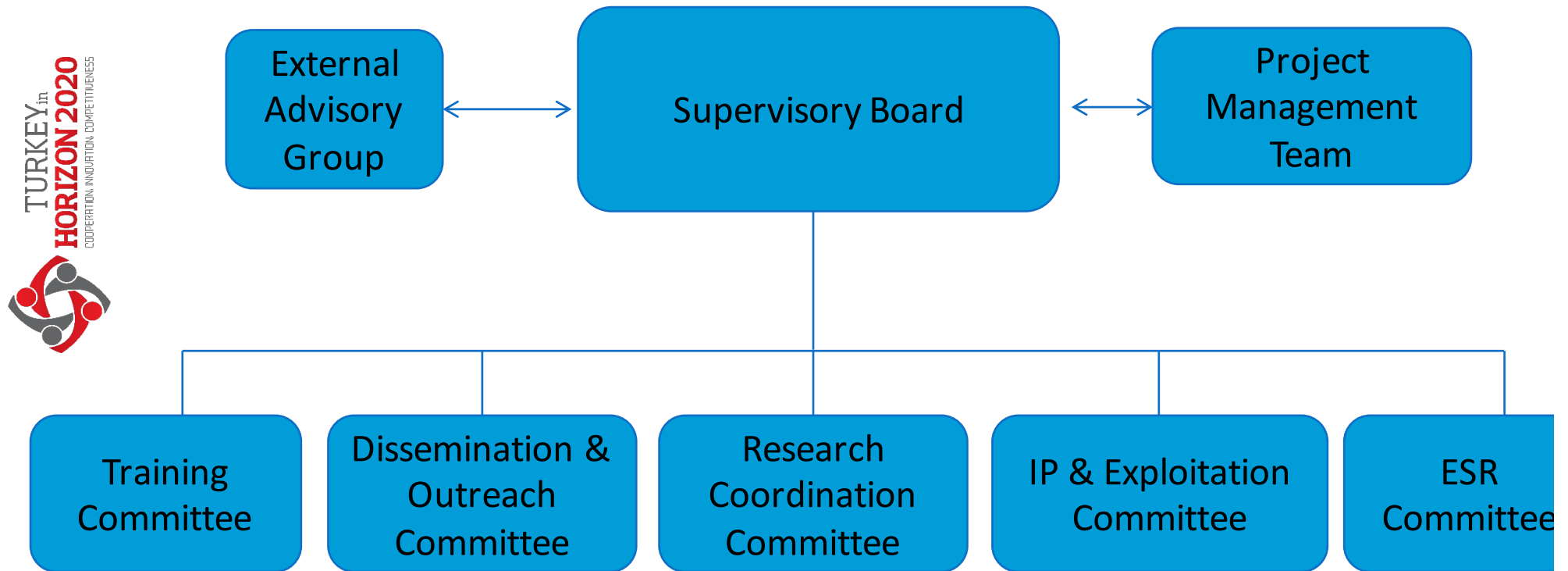
## 3.1: Workplan

---



- **Deliverables** are for defining payment (reports, prototypes, results etc.). When the deliverable is there you get paid.
- **Milestones** are checkpoints for measuring progress. For example - the report will be completed on the 18th Month (M18) of the project, or WP 1 will be complete by M9.
- You should have more Deliverables than Milestones

# Suggested Management Structure



## 3.2: Management

---



- Strategy for **dealing with Scientific Misconduct**: What would you do if an ESR accused another of Falsification, Fabrication or Plagiarism? What processes are in place in the participants to deal with misconduct?
- European Code of Conduct for Research Integrity
- [http://www.esf.org/fileadmin/Public\\_documents/Publications/Code\\_Conduct\\_ResearchIntegrity.pdf](http://www.esf.org/fileadmin/Public_documents/Publications/Code_Conduct_ResearchIntegrity.pdf)
- **Network organisation and management structure**: explain decision making processes (e.g. majority rules) and conflict resolution strategy
- **Progress monitoring** and evaluation of individual projects: link back to 1.3 Supervision. Focus on timings and structures here

## 3.2: Management

---

- **Risk management:** include research risks and project management risks and contingency plans for both (use the table provided)
- **Recruitment:** centralised recruitment is best. Describe the application process, applicant requirements, decision making process. Use **EURAXESS Jobs** to advertise. Explain employment conditions (employment contracts mandatory)
- **Overall quality assurance** – external review/monitoring of the ITN by an independent panel/external advisory group
- **Internal communications strategy** to keep the consortium and the ESRs in regular contact



# The importance of a good Gantt Chart

---

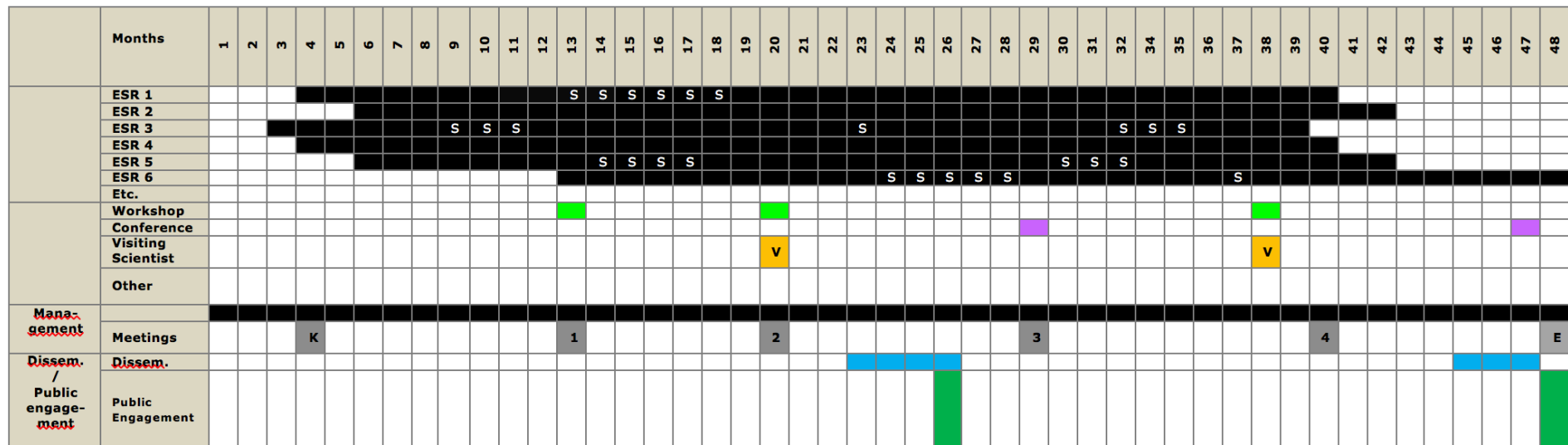
- Project at a glance in one page
- Should Include:
  - ESR Recruitment
  - Secondments
  - Training Activities and Events
  - Management Activities and Meetings
  - Communication Activities
  - Dissemination and Exploitation Activities
  - Public Engagement Activities
- Should be coherent with the proposal text
- Avoid negative comments from evaluators



# Original Gantt Chart at the Template

## 4. Gantt Chart

*Reflecting ESR recruitments, secondments, training events, management and dissemination / public engagement activities*

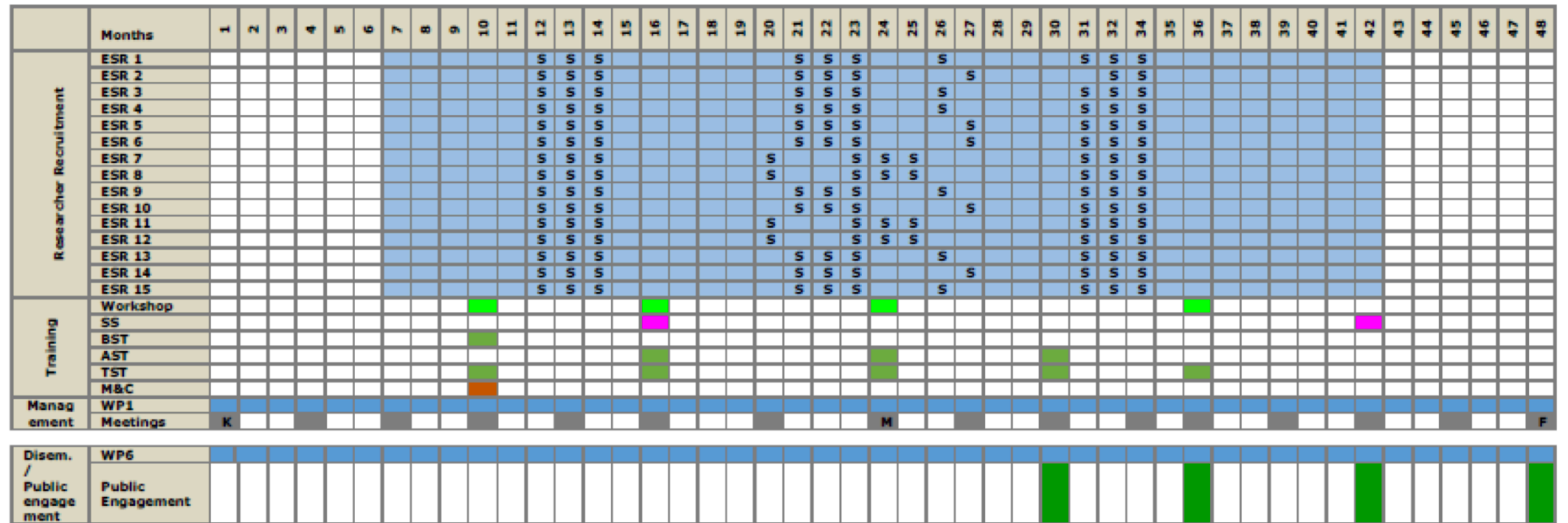


**S = Secondment<sup>1</sup>**  
**K = Kick-off meeting**  
**E = End of project**

<sup>1</sup> **30% secondment rule:** Under ETN, each recruited researcher can be seconded to other beneficiaries and /or to partner organisations for a duration of up to 30% of his/her recruitment period (this limitation does not apply to EID and EJD, insofar as time spent at other participating organisations occurs in line with the proposal).



## GANTT CHART 1



S = Secondment<sup>1</sup>, BST: Basic Scientific Training, AST: Additional Scientific Training, TST: Transferable Skills Training, M&C: Mentoring and coaching for ESRs supervisors, SS: Summer School, K = Kick-off meeting, M = Mid-term review, F: Final meeting,



		Months																																																																																																																																																																																																																																																																																																																																																																																																																																																																																																																																																																																																																																																																																																																																																																																																																																																																																																																																																																																																																																																																																																																																																																																																																																																																																																																																																																																																																																												
Researcher Recruitment		ESR 1																																																																																																																																																																																																																																																																																																																																																																																																																																																																																																																																																																																																																																																																																																																																																																																																																																																																																																																																																																																																																																																																																																																																																																																																																																																																																																																																																																																																																																												

S=Secondment<sup>1,2</sup> K=Kick-off meeting E=End of project C=Int. Major Conference P=Manuscript submission

V=External Scientist Visit

	Months	1	2	3	4	5	6	7	8	9	10	11	12	13	14	15	16	17	18	19	20	21	22	23	24	25	26	27	28	29	30	31	32	34	35	36	37	38	39	40	41	42	43	44	45	46	47	48
	ESR 1																																															
	ESR 2																																															
	ESR 3																																															
	ESR 4																																															
	ESR 5																																															
	ESR 6																																															
	ESR 7																																															
	ESR 8																																															
	ESR 9																																															
	ESR 10																																															
	Workshop																																															
	Conference Visiting Scientist																																															
	TransferSkill Workshop																																															

		1	2	3	4	5	6	7	8	9	10	11	12	13	14	15	16	17	18	19	20	21	22	23	24	25	26	27	28	29	30	31	32	34	35	36	37	38	39	40	41	42	43	44	45	46	47	48
M'ment			K										1												2										3													
Dissem. / Public e'ment	Meetings Dissemn. Public engagement	*			B	P							E	E											R																			4			R	E
													E	E											E	E																					E	

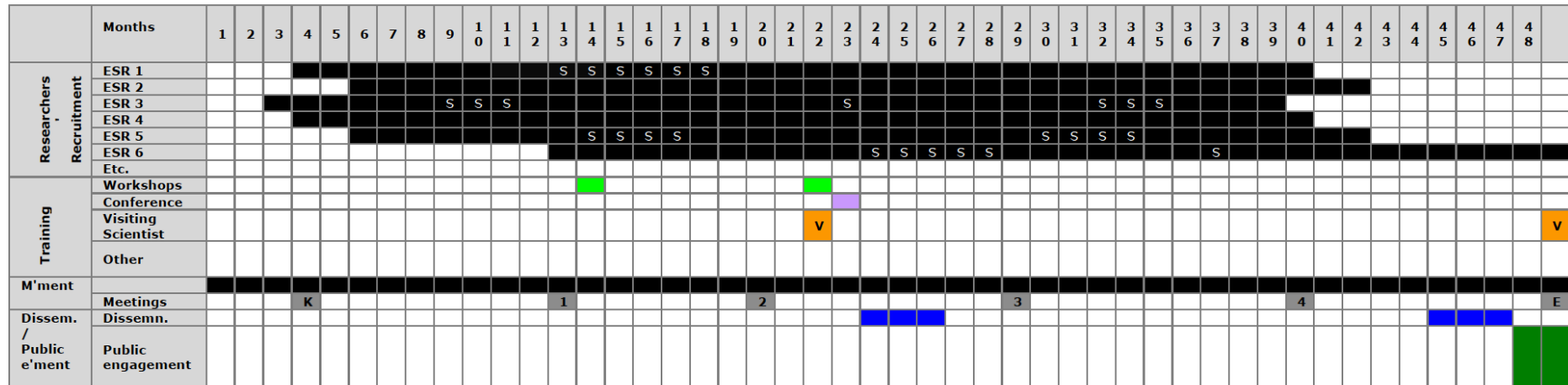
**S = Secondment<sup>1</sup>**  
**K = Kick-off meeting**  
**E = End of project**



Months	1	2	3	4	5	6	7	8	9	10	11	12	13	14	15	16	17	18	19	20	21	22	23	24	25	26	27	28	29	30	31	32	33	34	35	36	37	38	39	40	41	42	43	44	45	46	47	48	
ESR 1																		S	S	S	S	S	S	S																									
ESR 2																		S	S	S	S	S	S	S																									
ESR 3																		S	S	S	S	S	S	S											S	S	S												
ESR 4																		S	S	S	S	S	S	S																									
ESR 5																		S	S	S	S	S	S	S										S	S	S													
ESR 6																		S	S	S	S	S	S	S																									
ESR 7																		S	S	S	S	S	S	S								S	S	S															
ESR 8																		S	S	S	S	S	S	S																									
ESR 9																		S	S	S	S	S	S	S																									
ESR 10																		S	S	S	S	S	S	S																									
ESR 11																		S	S	S	S	S	S	S																									
ESR 12																		S	S	S	S	S	S	S																									
ESR 13																		S	S	S	S	S	S	S																									
ESR 14																		S	S	S	S	S	S	S																									
Training weeks																																																	
Summer school																																																	
Online courses																																																	
Final conference																																																	
Management meetings				K																																													
Dissemination																																																	
Public engagement																																																	

## Gantt chart

*Reflecting ESR recruitments, secondments,<sup>22</sup> training events, management and dissemination / public engagement activities*



**S = Secondment**


**K = Kick-off meeting**

**E = End of project**


# Buiding our Consortium

[About this site](#) | [Legal notice](#) | [Cookies](#) | [Contact](#)





## ENTERPRISE EUROPE NETWORK




Business Support on Your Doorstep

[HOME](#) [ABOUT](#) [CONTACT POINTS](#) [OUR SERVICES](#) [SECTOR GROUPS](#) [EVENTS](#) [SUCCESS STORIES](#)

[MEMBER'S CORNER](#)

### Find your local contact point

The Network helps small and medium-sized enterprises (SMEs) make the most of business opportunities in the EU and beyond. Have a look at the many services offered free of charge by our 600 member organisations, including chambers of commerce and industry, technology centres, universities and development agencies.



### Partnering opportunities

2016-03-15, Italy  
**Italian company specialized in creating electrical and mechanical systems is looking for partners in order to apply for international tenders**

The Italian company operates in the electrical sector and it is specialized in designing of electrical and mechanical systems, intruder alarm systems, filtering and suction systems. It also makes electrical, automations and photovoltaic-ren [...]

<http://een.ec.europa.eu>

<http://een.ec.europa.eu/about/branches/turkey>



# Your National Contact Point



**Your country**



**MSCA**

[http://ec.europa.eu/research/participants/portal/desktop/en/support/national\\_contact\\_points.html](http://ec.europa.eu/research/participants/portal/desktop/en/support/national_contact_points.html)





# Net4mobility Portal

Net4Mobility

LESS EXP. NCP

MORE EXP. NCP

EVENTS

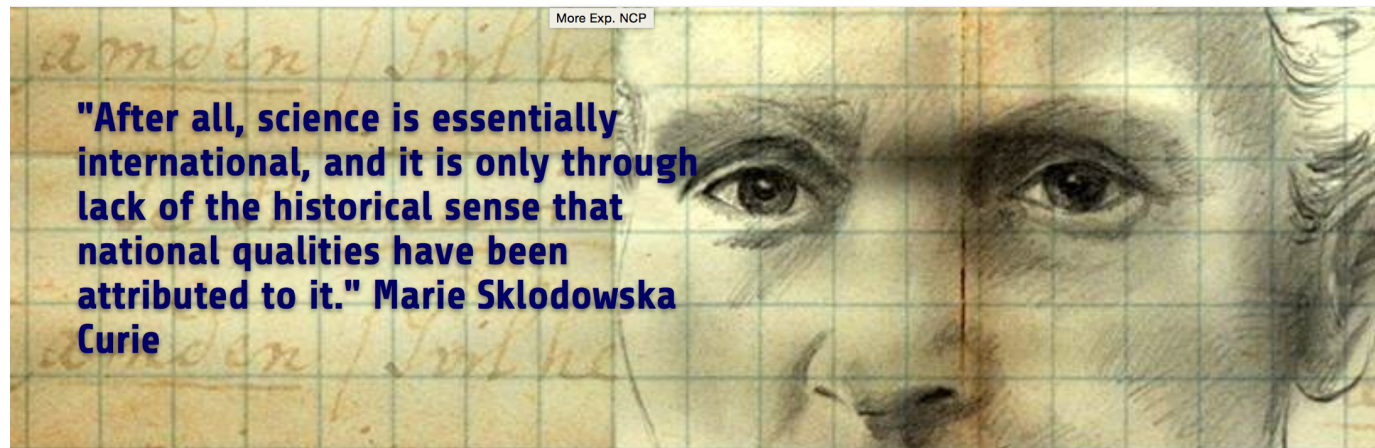
NCP DOC

EOI

NCP CONTACTS

ABOUT NET4MOBILITY

NCP INTRANET



Welcome to Net4Mobility



Net4Mobility Calendar



Net4Mobility Tweets

<http://www.net4mobility.eu>



# THANK YOU

---



**Jesús Rojo**

Fundación para el Conocimiento madri+d

[jesus.rojo@madrimasd.org](mailto:jesus.rojo@madrimasd.org)

Tel: +34 91 781 65 72

**fundación** para el  
**conocimiento**  
**madri+d**