

PLANET SA

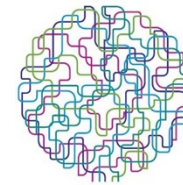
Raphael Koumeri

rcoum@planet.gr

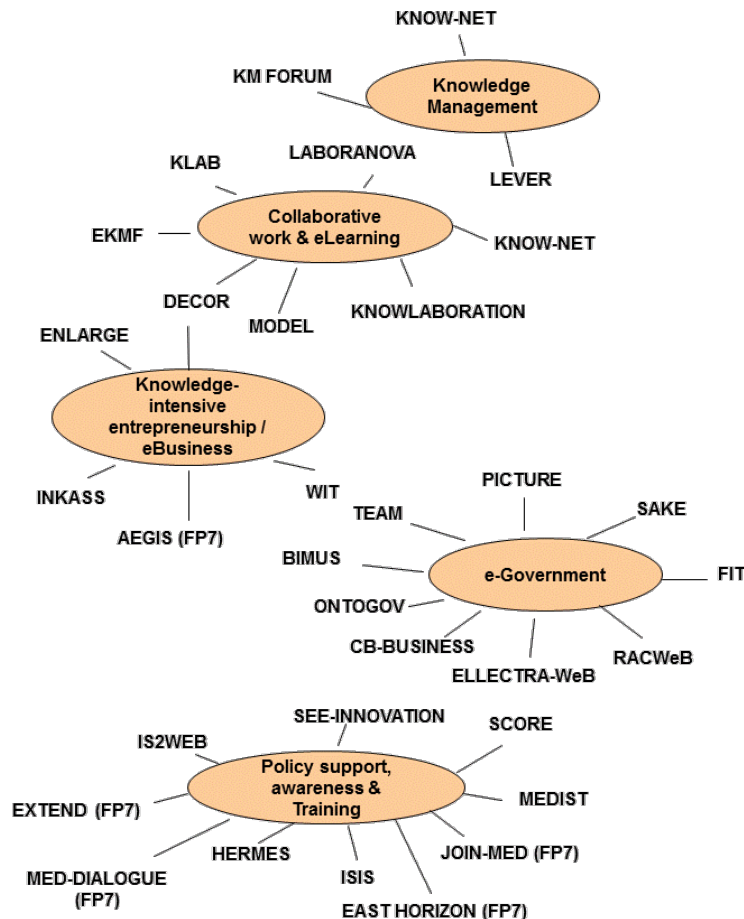
This presentation is for

- Workshop 1** Big Data
- Workshop 3** Photonics and Micro-and-Nanoelectronics
- Workshop 2** Robotics
- Workshop 4** internet of Things

Description of the Organization



PLANET'S R&D project landscape



➤ **PLANET is one of the largest Greek Management and Strategic Consulting companies**

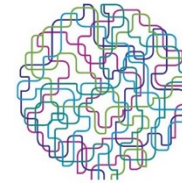
▲ **PLANET has co-ordinated or participated in over 35 RTD projects, funded by the EU's Framework Programmes for Research and Technological Development**

Description of the your research interest



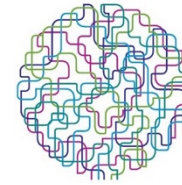
PLANET SA focus on:

- ◆ Development of innovative **methods, scenarios and models** that anticipate and shape the future evolution of the information society.
- ◆ **Evaluation** and **validation** of advanced technological solutions in real business/organisational settings.
- ◆ Development of **market studies** and **business plans** for the future exploitation and deployment of RTD results.
- ◆ Support to EU RTD **international cooperation policy development** e.g. through the determination of research priorities for non EU countries.
- ◆ Provision of **training and support** to users of RTD results and newcomers (e.g. research actors in third countries) in the Framework Programmes.



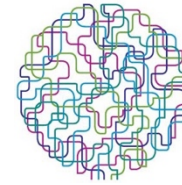
- **Objectives:** Facing increased competitive pressures due to globalization and increased quality requirements from their customers, SMEs specialised in manufacturing technology must increase their productivity and their competitiveness in order to survive and prosper. They must also diversify their products and consider the urgent need of the development of Robotics. However to enter successfully this market segment **requires a good understanding of the needs of the client industry by** comparing a firm's business practices and performance with those of a group of comparable firms which have introduced robotics , or with those of firms that are recognised for their excellence. As management challenges have increased in complexity, **the objective is to elaborate the appropriate benchmarking tool for organisations, both large and small, and for governments seeking to assist them.**
- **Expected results:** Defined the appropriate research and market targets for the Robotics SMEs manufacturers. Continuously improve their penetration in this market.

Consortium - profile of known partners

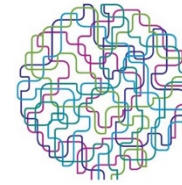


No	Partner Name	Type	Country	Role in the Project
01	PLANET	RTD		Expertise to work as part of this benchmarking and market assessment activity.
02				
03				
04				
05				

Consortium - required partners



No	Expertise	Type	Country	Role in the project
01	Standardisation body	Public		
02	Robotics manufacturer	SME		
03	Automated industries	IND		
04	Robotics laboratory	RTD		
05	Financial organisation	IND		
06				



ICTURKEY
ISTANBUL 2016

Raphael Koumeri
PLANET SA
EU R&I Programmes
Greece
+302106905000
rcoum@planet.gr
www.planet.gr