



***ELINISTECH***

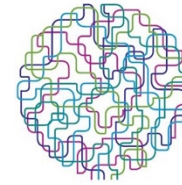
***Dr. Nissim Zur***

nissim@elinistech.com

**This presentation is for**

- ✓ **Workshop 4** internet of Things

# Description of the Organization



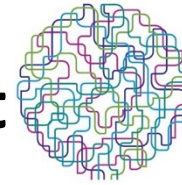
ICTURKEY  
ISTANBUL 2016

## WHO IS ELINISETCH ?

- Commercial R&D institute target to license ready internet of things("IoT") designs.
- We are the biggest worldwide design house **ONLY** for Internet of Things ("IoT") devices
- OEM licensed full production files to manufacturers.
- Unique Intellectual property ready designs
- Data over Bluetooth Smart long range 200 meters, from node to node
- Mesh Bluetooth Smart data 200 meters, unlimited hops/ nodes / distance
- Bridges Bluetooth Smart long range mesh to Wi-Fi (AP+ST)
- Bridges Internet apps to Infra-Red **in/out** of our Bridge
- Designs are based on a very low cost chips possible. Bluetooth Smart & Wi-Fi.
- **BOM of Bluetooth Smart tag cost less than 2 USD.**
- **BOM Bluetooth Smart + Wi-Fi cost less than 4 USD**
- Our technologies are a game-changing for IoT and Industrial IoT ("IIoT) devices

**We license all our designs to customers. Hardware, Firmware, PCB , Smart phone apps.**

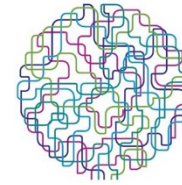
# internet of things("IoT") research interest



## The internet of things("IoT") status:

- Most IoT devices need to be very small therefore runs on small coin battery.
- The market is asking for devices that can work more than a year without replacement the battery
- The only technology that supports **that** is Bluetooth Smart
- Bluetooth Smart has maximum distance of 10 meters
- Bluetooth Smart transmission distance can't be amplified due to regulation
- The only gateway today that supports Bluetooth Smart today is user's smart phone and **Elinistech's Bridge**.

# Any IOT relevant 2017 CALL TOPIC is OK with as



## The problems:

- Since smart phone is the only gateway for Bluetooth Smart that can send data to the internet, **when there is no smart phone in 10 meter range. The IoT devices can't report to internet data base**
- 10 meters does not cover a normal house end-to end
- IoT devices can't use Wi-Fi due to large power needed by Wi-Fi chips.

## Elinistech solution:

- Unique design for Bluetooth Smart 200 meter by increase sensitivity.
- Mesh on Bluetooth Smart devices to unlimited hopes. Unlimited nodes distance
- Wi-Fi - Bluetooth Smart, mesh, long range bridge
- Low cost sensor based on miniature devices
- Battery can last several years due to unique sleep mode based on sensors reports

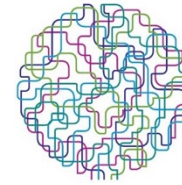
## Expected results from ICTURKEY meetings

- Any IoT project that needs our kind of unique technologies

# We look for IoT HORIZON 2020 - Work

Programme 2016 - 2017

Cross-cutting activities (Focus Areas)



ICTURKEY  
ISTANBUL 2016

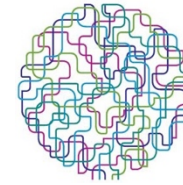
[http://ec.europa.eu/research/participants/data/ref/h2020/wp/2016\\_2017/main/h2020-wp1617-focus\\_en.pdf](http://ec.europa.eu/research/participants/data/ref/h2020/wp/2016_2017/main/h2020-wp1617-focus_en.pdf)

- We are looking for any kind of partners RTD, SME, INS
- We can act in any role, including any IoT devices design and manufacturer.
- Pilots shall be citizen-driven, involving existing and local communities at an early stage and addressing a combination of sustainability areas. The corresponding activities should accompany the pilots, analyze societal, ethical and ecological issues related to the pilots, and develop recommendations for tackling IoT adoption barriers including educational needs and skill-building.
- Consortium participation requires at least two entities from domains different than ICT technologies (e.g. social sciences, psychology, gerontology, economy, art, etc')

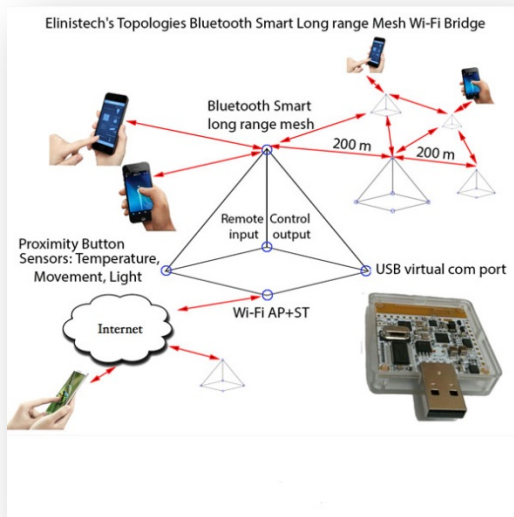
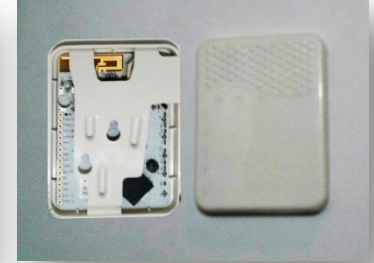
Dr. Nissim Zur Elinistech CTO

Israel+972544500635 [nissim@elinistech.com](mailto:nissim@elinistech.com)

[www.elinistech.com](http://www.elinistech.com) Skype: [nissim.test](https://www.skype.com/people/nissim.test)



ICTURKEY  
ISTANBUL 2016



Elinistech's Intellectual property ready design to H2020