

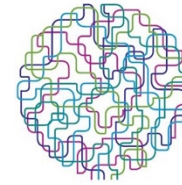


Sesame University
Nihel Boussetta
Nihel.boussetta@gmail.com

This presentation is for

- Workshop 1** Big Data
- Workshop 3** Photonics and Micro-and-Nanoelectronics
- Workshop 2** Robotics
- Workshop 4** internet of Things

Description of the Organization



ICTURKEY
ISTANBUL 2016

Sesame University (High School of Applied Sciences and Management) is a well known tunisian engineering school founded in 2007.

Sesame has several collaborations with academic partners such as: CNAM Paris, SKEMA Business School (Lille et Sophia), Telecom Sud Paris, EISTI Paris, l'Ecole des Mines d'Alès (EMA)...

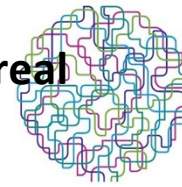
Moreover, the university has different industrial partners such as Discovery DataSoft, Cynapsys, Focus...

Description of the your research interest



- Sesame University has different research teams in different fields such as:
- IoT
- Cloud computing
- Robotics
- ERP Management

H2020 Call: IoT-03-2017 (RIA) R&I on IoT integration and platforms Intelligent wheelchair for supervising patients with automatic and real time localization based on IoT.



The system aims to localize the wheelchair using the fusion of data collected from different sensors (proprioceptive sensors (odometry), Ultrasonic sensors, Cameras...) in order to have the best global estimation of the position. Moreover, the system deals with integrating of WBAN sensors in the wheelchair in order to collect physiological data of the patient to provide the real time health state of the patient.

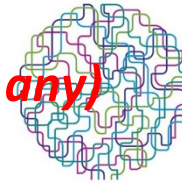
- Objectives:

- Real-time localization of the wheelchair.
- Fusion data collected from different sensors to have to best global estimation of the position.
- Integration of WBAN sensors to supervise the patient.
- Secure communications between different sensors.
- Outsource physiological collected data of the patient on distant servers (such as clouds...).

- Expected results

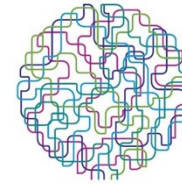
- Introduce an intelligent wheelchair for patients which can be automatically localized.
- Supervise the health state of the patient in real time manner.

Consortium - profile of known partners *(if any)*

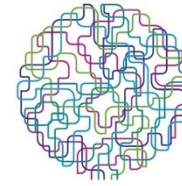


No	Partner Name	Type	Country	Role in the Project
01		RTD		
02		SME		
03		IND		
04				
05				
06				
07				
08				

Consortium - required partners



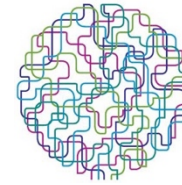
No	Expertise	Type	Country	Role in the project
01	IoT integration	RTD	EU/ Turkey/ Africa	Prototyping process
02	Robotics	SME	EU/ Turkey/ Africa	Design of solutions
03	Data Fusion	IND	EU/ Turkey/ Africa	Analysing data
04	Signal processing	SME	EU/Turkey/ Africa	Analysing signals
05				
06				
07				
08				



ICTURKEY
ISTANBUL 2016

Nihel Boussetta
Sesame University
Tunisia
+21623876960
nihel.boussetta@gmail.com

Recommendations



- The presentation **has to** last up to **4 minutes (maximum)**
- Do not overload your slides
- Provide weblinks to additional material
- Slides should be in English
- Do not use videos etc. – they might be not supported by the Infoday IT system
- Send your presentation in PDF or PPTX format to: ICT@turkeyinH2020.eu
before November 21, 2016.