

Horizon Europe Launch Event

Turgut Kksal YALIN

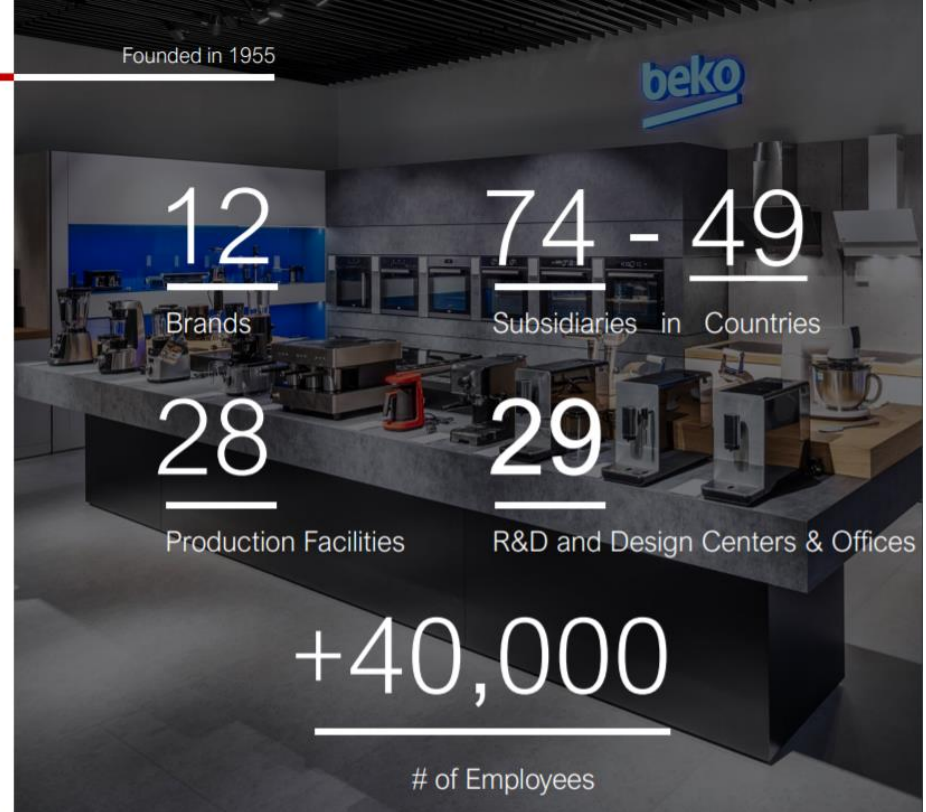
ARELİK A.Ş.

- My Story in Horizon 2020-

İstanbul, 21 March 2022

Arçelik

Full-Range, Lifestyle
solutions provider





Atolye 4.0
Arçelik Advanced Robotics Lab





Atölye 4.0

Arçelik Advanced Robotics Lab



Areas of Interest

- Machine Learning
- Image Processing
- Cognitive Robotics
 - Speech & Gesture recognition
 - Intention recognition
- Data Analytics
- Deep Learning for automation
- Industrial IoT
- Low-cost automation
- Mobile Robotics
 - Autonomus navigation
 - Smart fleet management
 - Logistics management



Collaborations

- Fraunhofer Institutes (IAO – IPA – IWU – IPK)
- ITRI of Taiwan
- METU - ITU - OZU - Sabanci Univ - KOC Univ.
- QMUL - Polimi - University of Patras – AUTH
- KU Leuven – JSI – UNIGE - BOR

What is Atölye 4.0 ?

A research, training and experience center dedicated to the digital transformation of the human resource through Industry 4.0 enablers.



Competences

- Industrial Automation
- Industrial Robotics
- Human-Robot Collaboration
- Image Processing – Stereo Vision
- Mobile Robotics & SLAM
- Machine & Deep Learning
- Data Analytics

EU funded projects



The Team

- Automation
 - 6 engineers (MSc & PhD)
 - 3 technicians
- Process
 - 5 engineers (MSc & PhD))
 - 2 technicians
- Industrial Engineering
 - 6 engineers (MSc & PhD)
 - 3 technicians





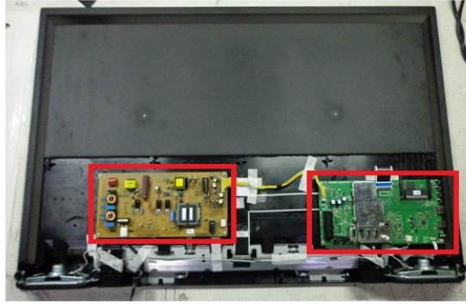
H2020-NMBP-TR-IND-2018-2020 (DT-FOF-02-2018 RIA)
01.10.2018 – 13.05.2022

COLLABORATE (Co-production CeLL performing Human-Robot Collaborative AssEmbly)
*Building state-of-art methods for teaching assembly tasks to robots using human demonstration,
to facilitate genuine human-robot collaboration*

Prof. Zoe Doulgeri (Aristoteles University of Thessaloniki - AUTH)
6,864,600.00 €

Consortium:
*AUTH, CERTH, ARMINES, LMS, KULEUVEN, IDIAP, UBU, ASTI, UNIGE, JSI, BOR
CRF, ROMAERO, KOLEKTOR, ARCELIK*

Assembly Operations Before Collaborate



LCD TV Module with Chassis(green), Power Supply(brown)



Collaborate Solution



COLLABORATE

Challenge 3: Performing LCD TV Assembly



COLLABORATE

 <https://collaborate-project.eu/>

 <https://www.linkedin.com/company/collaborate-project-h2020/>

 https://www.youtube.com/channel/UC-_NC8jTg6YJwJ5B3gae2kQ

 https://twitter.com/collaborate_eu