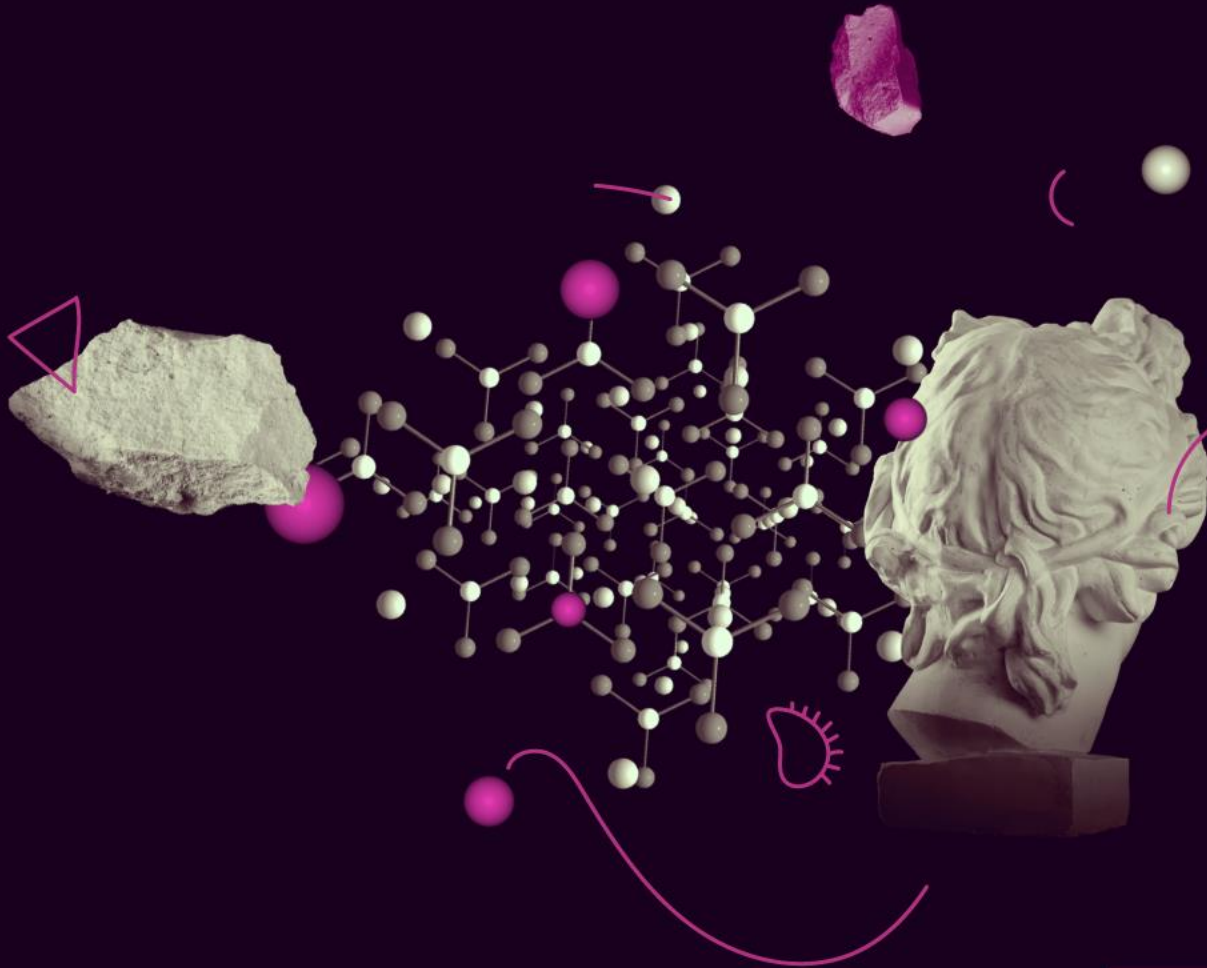




MSCA

Marie Skłodowska-Curie Actions

Developing talents, advancing research



HE MSCA: Bridging Business and Research What opportunities you can find under MSCA Staff Exchange - The Other Opportunities for the non-academic sector within MSCA Doctoral Networks – COFUND – Postdoctoral Fellowships

Rodrigo Gutiérrez Domínguez

Head of Sector - Unit A3

European Research Executive Agency

Marie Skłodowska-Curie Actions



@REA_research, @MSCAactions

Key features of the MSCA



**Researchers' training,
skills & career
development**
(all career stages)



**Excellent research in all
domains**
(bottom-up approach)



**International, cross-
sectoral
& interdisciplinary
mobility**



**Attractive working
& employment
conditions**



**Structuring impact on
organisations through
excellent programmes**



**Strong collaboration
with industry & SMEs**



The MSCA under Horizon Europe

Doctoral Networks

*Doctoral programmes
in and outside
academia incl. joint &
industrial doctorates*

Postdoctoral Fellowships

*Support to excellent
postdoctoral
researchers*

Staff Exchanges

*Support for research
and innovation staff
exchanges*

COFUND

*Co-funding doctoral
and postdoctoral
programmes*

MSCA and Citizens

*Public outreach events
(Nights)*

Total budget 2021-2027: €6.6 billion



Doctoral Networks

The Marie Skłodowska-Curie Actions

1

Doctoral Networks

Doctoral programmes in and outside academia incl. joint & industrial doctorates

2021: 402 M€, DL 16/11/2021

2022: 428 M€, DL 15/11/2022

2

Postdoctoral Fellowships

Support to excellent postdoctoral researchers

2021: 242 M€, DL 12/10/2021

2022: 257 M€, DL 14/09/2022

3

Staff Exchanges

Support for research and innovation staff exchanges

2021: 72 M€, DL 09/03/2022

2022: 77 M€, DL 08/03/2023

4

COFUND

Co-funding doctoral and postdoctoral programmes

2021: 89 M€, DL 10/02/2022

2022: 95 M€, DL 09/02/2023

5

MSCA and Citizens

Public outreach events (Night)

2022: 15 M€, DL 07/10/2021

Doctoral Networks – Modes of implementation

• 3 modes

DN

Doctoral Networks

*Participants implement
a joint research programme*

DN-ID

Doctoral networks
Industrial
Doctorates

*Doctoral training with the non-
academic sector*

DN-JD

Doctoral Networks
Joint
Doctorates

*Doctoral programme to deliver
joint degrees*

NEW: all 3 modes compete within the same scientific panels

Doctoral Networks – Features for the DN 2022 call

Size

- Up to **360 person-months** (standard DN)
+ **180 additional person-months for joint or industrial doctorates** (incentive)

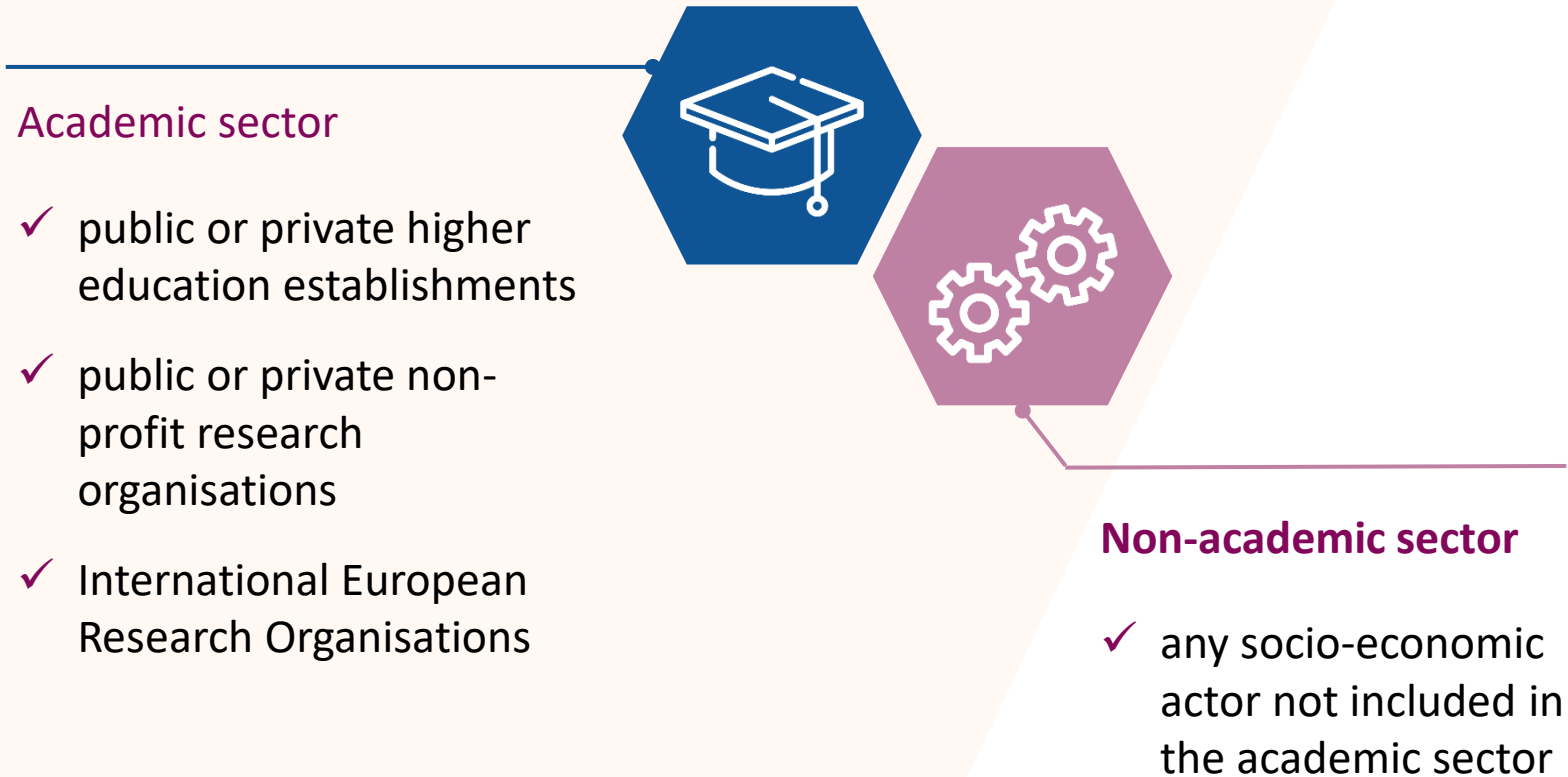
Duration

- **Programme:** max. 48 months
- **Fellowship:** between 3 and 36 months
- **Secondments:** worldwide, up to 1/3 of the fellowship duration
- **Industrial doctorates:**
 - 50% in the non-academic sector;
 - Academic and non-academic organisations jointly supervise
 - No ceiling for secondments duration
- **Joint doctorates:**
 - Joint award of PhD
 - Joint admission, selection, training, supervision, governance
 - Letter of pre-agreement to deliver joint/double/multi degrees (template)
 - No ceiling for secondments duration

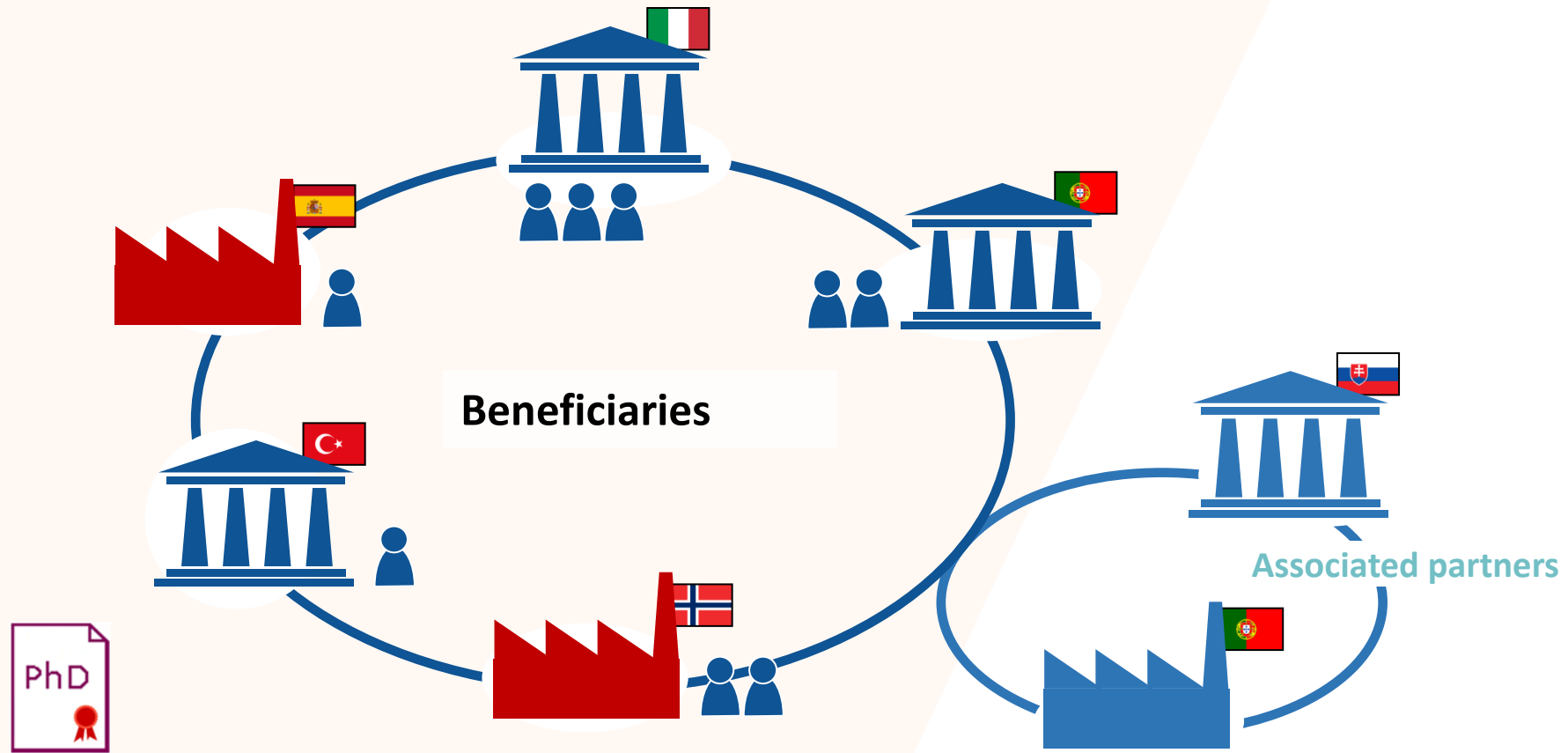
Doctoral Networks – Eligibility Conditions

- **At least 3 independent legal entities:**
 - Each established in a different EU Member States or Horizon Europe Associated Country
 - Minimum of 1 beneficiary from an EU Member State
- **All beneficiaries must recruit at least one doctoral candidate.** They are required to host at their premises and supervise recruited researchers, or use associated partners linked to them to do so
- **Not more than 40.0% of the EU contribution may be allocated to beneficiaries in the same country** or to a single international organisation.
- **Specific eligibility conditions for Industrial and Joint Doctorates**
- **!** Re-submission restrictions for proposals scoring below 80% in the previous call

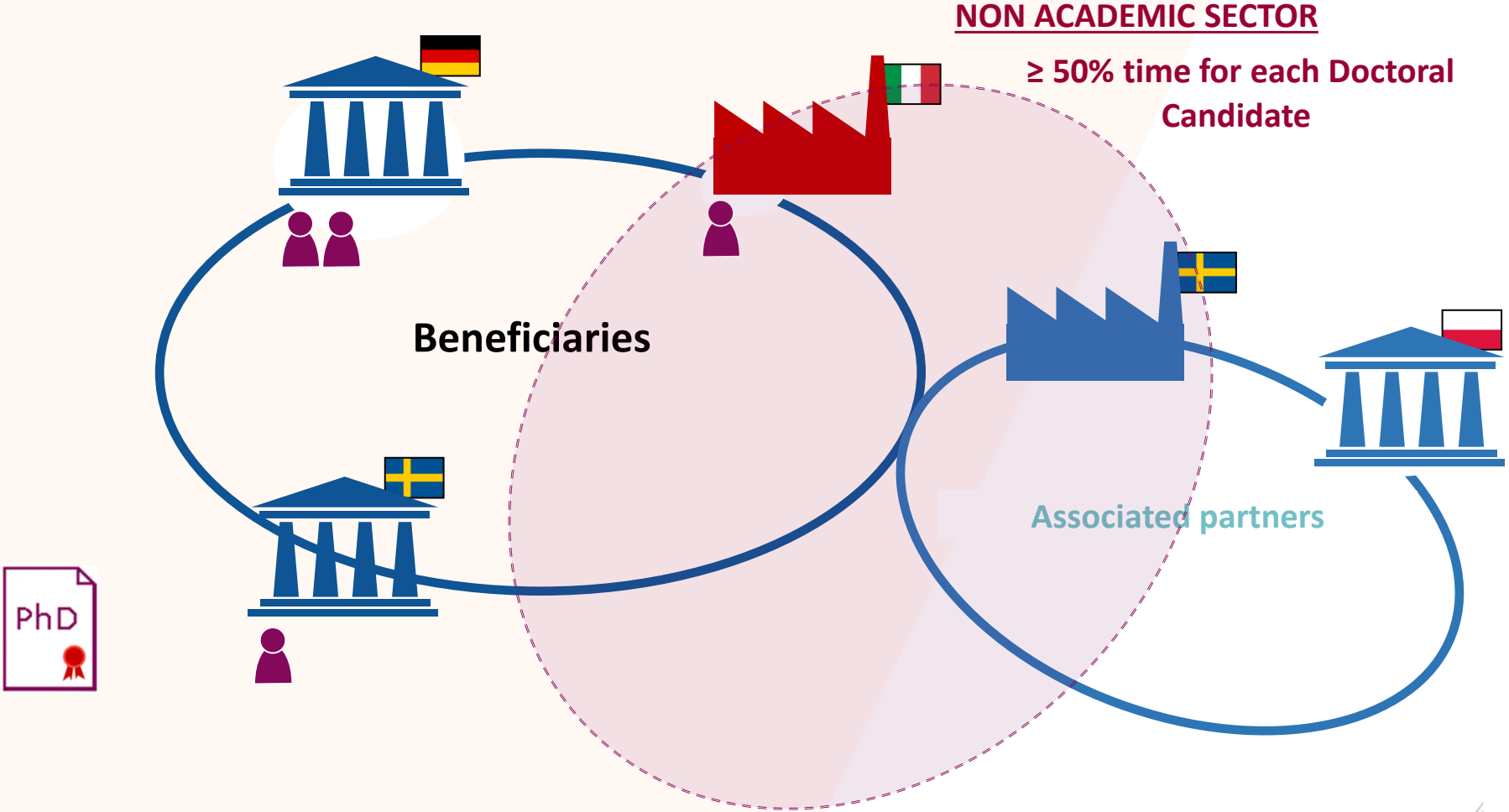
Doctoral Networks – Academic / non-academic sectors



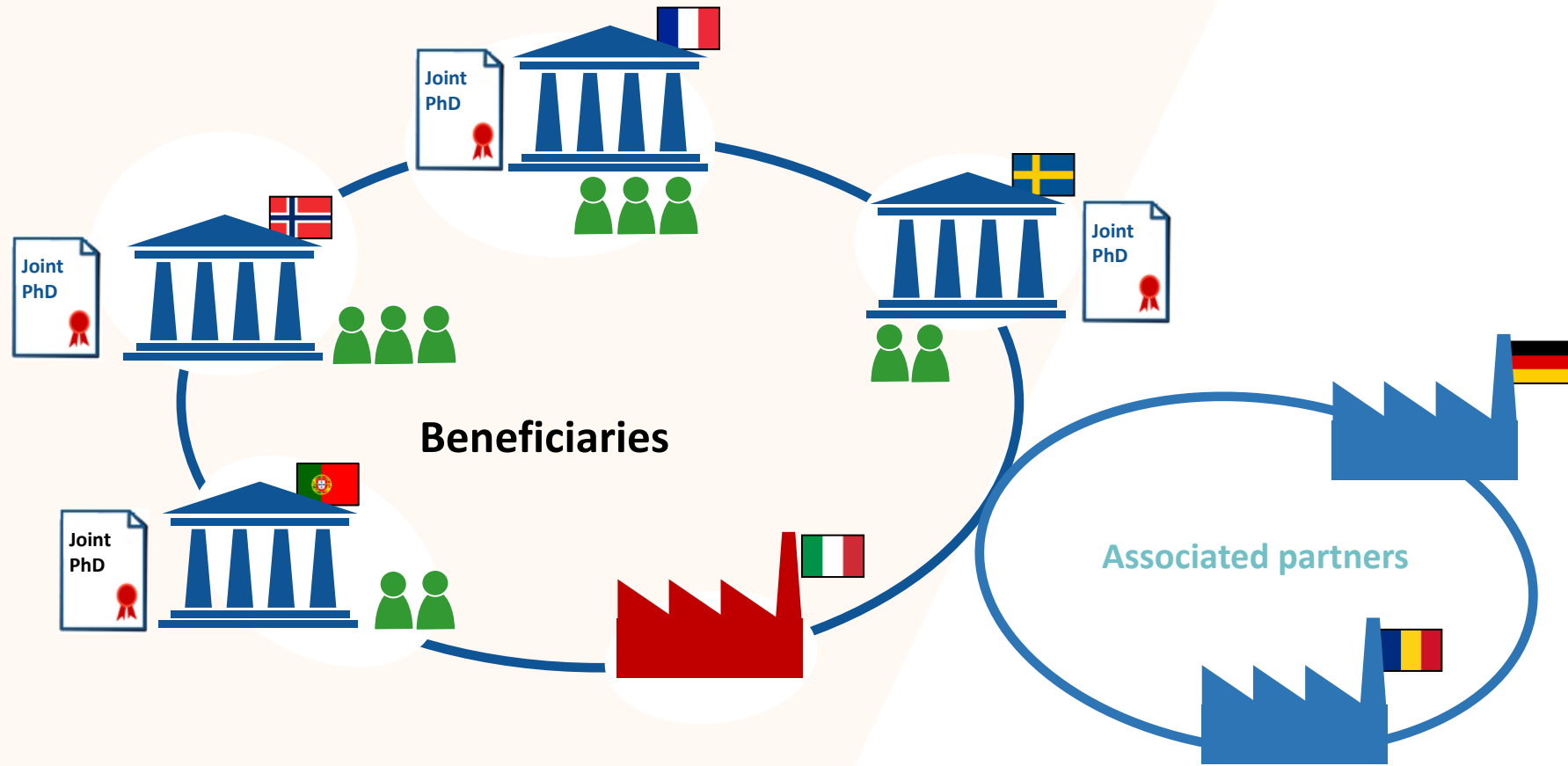
Doctoral Network – Example consortium



Industrial Doctorate – Example consortium



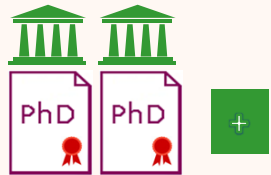
Joint Doctorate – Example consortium



Joint Doctorate – Degrees



Joint degree: single diploma issued by at least 2 academic institutions located in 2 different countries and recognised officially



Double/multiple degree: 2 or more separate national diplomas issued by two or more higher education institutions located in different countries and recognised officially



Letters of pre-agreement to deliver joint/double doctoral degrees are mandatory in the proposal

Doctoral Networks – Funding

Contributions for recruited researchers Per person-month					Institutional unit contributions Per person-month	
Living allowance	Mobility allowance	Family allowance** (if applicable)	Long-term leave allowance (if applicable)	Special needs allowance (if applicable)	Research, training and networking contribution	Management and indirect contribution
EUR 3400*	EUR 600	EUR 660	EUR 4000 x % covered by the beneficiary	Requested unit x (1/number of months)	EUR 1600	EUR 1200

*A **country correction coefficient** applies to the living allowance in order to ensure equal treatment and purchasing power parity for all researchers

** **NEW** - A **family allowance** to contribute to mobility-related costs of researchers with family obligations which can be granted **during** the project.

Doctoral Networks – Resources

Useful links

Funding and Tenders opportunities (documents & submit application):

<https://ec.europa.eu/info/funding-tenders/opportunities/portal/screen>

MSCA website:

<https://ec.europa.eu/research/mariecurieactions/>

European Research Executive Agency website:

https://rea.ec.europa.eu/index_en

MSCA in Horizon Europe Info Days:

https://ec.europa.eu/info/research-and-innovation/events/upcoming-events/horizon-europe-info-days/marie-sklodowska-curie-actions_en

MSCA Guidelines on Supervision:

<https://data.europa.eu/doi/10.2766/508311>

[311](https://data.europa.eu/doi/10.2766/508311)

Do you have questions?

Ask advice to your MSCA/EU National Contact Point

<https://ec.europa.eu/info/funding-tenders/opportunities/portal/screen/support/ncp>

Ask your questions about EU funding, validation of participants, and others to the Research Enquiry Service

https://ec.europa.eu/info/research-and-innovation/contact/research-enquiry-service_en





European
Commission

COFUND



*Marie Skłodowska
Curie Actions*

The Marie Skłodowska-Curie Actions

1

Doctoral Networks

Doctoral programmes in and outside academia incl. joint & industrial doctorates

2021: 402 M€, DL 16/11/2021
2022: 428 M€, DL 15/11/2022

2

Postdoctoral Fellowships

Support to excellent postdoctoral researchers

2021: 242 M€, DL 12/10/2021
2022: 257 M€, DL 14/09/2022

3

Staff Exchanges

Support for research and innovation staff exchanges

2021: 72 M€, DL 09/03/2022
2022: 77 M€, DL 08/03/2023

4

COFUND

Co-funding doctoral and postdoctoral programmes

2021: 89 M€, DL 10/02/2022
2022: 95 M€, DL 09/02/2023

5

MSCA and Citizens

Public outreach events (Night)

2022: 15 M€, DL 07/10/2021

MSCA COFUND

Mono-beneficiary action to **co-fund** new or existing national, regional, institutional schemes for **doctoral** training and **postdoctoral** fellowships.

Focus

- Spread **best practices** of the MSCA by promoting **high standards** in the recruitment process and **excellent working conditions**
- Introduce **sustainable structuring effects**, by promoting excellent and sustainable research training, international, inter-sectoral and interdisciplinary cooperation and mobility
- Encourage **synergies** with Cohesion policy funds as well as the Recovery and Resilience Facility. Programmes could focus on specific disciplines, notably when based on Smart Specialisation Strategies.

MSCA COFUND

Modalities:

- **Doctoral Programmes:** offer research training activities to allow doctoral candidates to develop and broaden their skills and competences. They will lead to the award of a doctoral degree in at least one EU Member State or Horizon Europe Associated Country. The training activities should be based on the EU Principles on Innovative Doctoral Training.
- **Postdoctoral Programmes:** fund individual advanced research training and career development fellowships for postdoctoral researchers. The programmes should offer training to develop key transferable skills and competences common to all fields, foster innovation and entrepreneurship and promote and (where appropriate) reward Open Science practices.

MSCA COFUND

Who can apply?

- **Single legal entity established in an EU Member State or HE Associated country.**
- **All beneficiaries must recruit at least three researchers.** They are required to host at their premises and supervise recruited researchers, or use implementing partners linked to them to do so

MSCA COFUND

- **Co-funding**
 - Max **10 M€** per beneficiary per call (unchanged)
- **Duration**
 - **Programme:** max. 60 months (unchanged)
 - **Fellowship:** min 3 months (unchanged)
- **Recruitment**
 - Euraxess

MSCA COFUND

Eligible researchers:

- **Doctoral programmes:** researchers without a doctoral degree at the deadline of the co-funded programme's call; mandatory enrolment in a doctoral programme
- **Postdoctoral programmes:** researchers with a doctoral degree at the deadline of the co-funded programme's call
- **Any nationality**
- **Mobily rule:** must not have resided or carried out their main activity in the country of the recruiting beneficiary or implementing partner for more than 12 months in the 36 months immediately before the deadline of the co-funded programme's call

MSCA COFUND – Unit contributions

Novelties compared to H2020: new cost categories

Contributions for recruited researchers and institutional contributions

Per person-month

	COFUND allowance	Long-term leave allowance (if applicable)	Special needs allowance (if applicable)
Doctoral Programmes	EUR 2 800	EUR 2 800 x % covered by the beneficiary	Requested unit ¹ x (1/number of months)
Postdoctoral Programmes	EUR 3 980	EUR 3 980 x % covered by the beneficiary	Requested unit ¹ x (1/number of months)

Minimum remuneration applies:

EUR 2 800 for Doctoral researcher, EUR 3 980 for Postdoctoral researcher

(including both fellow's and employer's social contributions)



Postdoctoral Fellowships

The Marie Skłodowska-Curie Actions

1 Doctoral Networks

Doctoral programmes in and outside academia incl. joint & industrial doctorates

2021: 402 M€, DL 16/11/2021
2022: 428 M€, DL 15/11/2022

2 Postdoctoral Fellowships

Support to excellent postdoctoral researchers

2021: 242 M€, DL 12/10/2021
2022: 257 M€, DL 14/09/2022

3 Staff Exchanges

Support for research and innovation staff exchanges

2021: 72 M€, DL 09/03/2022
2022: 77 M€, DL 08/03/2023

4 COFUND

Co-funding doctoral and postdoctoral programmes

2021: 89 M€, DL 10/02/2022
2022: 95 M€, DL 09/02/2023

5 MSCA and Citizens

Public outreach events (Night)

2022: 15 M€, DL 07/10/2021

MSCA Postdoctoral Fellowships (PF)

Budget (2022): **€257mn** (€218.45mn European, €38.55mn Global)

Call deadline: **14 September 2022** (TBC)

Objective

➤ *“[E]nhance the creative and innovative potential of researchers holding a PhD, wishing to acquire new skills through advanced training, international, interdisciplinary and inter-sectoral mobility.”*

- **Monobeneficiary:** One researcher, one host organization (EU/AC)
- **Global** and **European** Fellowships
- Host organizations in **EU or HE Associated Countries**
- Open to **all scientific fields**, including Euratom
- Open to *“excellent researchers of **any nationality**” (with some restrictions for GF and Euratom)*

Key points about MSCA-PF

Postdoctoral researchers only

Maximum of 8 years FTE postdoctoral research experience

Researcher mobility scheme

Training through research

Non-Academic Placements possible (up to 6m at end of project)

Secondments encouraged (worldwide, up to 1/3 of project duration)

12-24m (EF) or 24-36m (GF) + Non-Academic Placement (max. 6m)

The MSCA-PF Evaluation

Large-Scale Evaluation

Due to large number of proposals

Standard Peer-Review

≥ 3 experts per proposal

Bottom-up Programme

Proposals and Experts from all disciplines

Expert Balance

of experience, nationality, gender, age, sector, etc.

8 Scientific Panels

CHE, ECO, ENG, ENV, LIF, MAT, PHY, SOC

Single-Stage Evaluation

Call Planning

<i>Call Opening:</i>	12 May 2022 (TBC)
<i>Call Deadline:</i>	14 Sept 2022 (TBC)
<i>Evaluation period:</i>	Oct 2022 – Jan 2023
<i>Launch Grant preparation:</i>	Feb 2023
<i>Project Starting dates:</i>	Mar/Apr 2023 - Sept 2024

Resources and Guidance (2021 Call)

- [MSCA Work Programme](#)
 - [MSCA-PF Guide for Applicants](#)
 - [Proposal templates](#)
 - [FAQs](#)
 - [Horizon Europe Model Grant Agreement](#)
 - [Horizon Europe Annotated Model Grant Agreement \(DRAFT\)](#)
-
- [MSCA Website](#)
 - [Research Enquiry Service](#)
 - [National Contact Points](#)



Questions and answers?

MSCA SE Info Session

The next Staff Exchanges call for proposals is now open for applications on [Participant Portal](#), 6 October, with a deadline on 8 March 2023.

Join our online info session on **7 December 2022** about **MSCA Staff Exchanges 2022**



Save the Date!



© European Union 2021

Unless otherwise noted the reuse of this presentation is authorised under the [CC BY 4.0](#) license. For any use or reproduction of elements that are not owned by the EU, permission may need to be sought directly from the respective right holders. Image sources: iStockphoto.com/Unsplash



Thank you!

European Research Executive Agency

#MSCA #HorizonEU

 **@REA_research @MSCAactions**

https://rea.ec.europa.eu/funding-and-grants/horizon-europe-marie-sklodowska-curie-actions_en



© European Union 2021

Unless otherwise noted the reuse of this presentation is authorised under the [CC BY 4.0](https://creativecommons.org/licenses/by/4.0/) license. For any use or reproduction of elements that are not owned by the EU, permission may need to be sought directly from the respective right holders. Image sources: [istockphoto.com/Unsplash](https://www.istockphoto.com/)

